

- LEGEND:**
- WATER QUALITY MONITORING STATIONS
- COOLING WATER INTAKES**
- 01 WONG KONG CONVENTION AND EXHIBITION CENTRE EXTENSION
 - 02 TELECOM HOUSE AND ACADEMY 1 ON PEARLWING APIS / SAU ON CENTRE
 - 03 WONG KONG CONVENTION AND EXHIBITION CENTRE PHASE 1
 - 04 WAN CHAI TOWER AND GREAT WALL CENTRE
 - 05 SUN HANG KAI CENTRE
 - 06 PROPOSED EXHIBITION STATION / WORLD TRADE CENTRE
 - 07 WINDSOR HOUSE
 - 08 CITY GREEN
 - 09 PROVIDENT CENTRE
 - 102 PROPOSED HERPA EXTENSION
 - 103 SUN HANG KAI CENTRE / REPRODUCTION
 - 107 WINDSOR HOUSE / TEMPORARY REPRODUCTION
- WSD SALT WATER INTAKE**
- WSD 1 WAN CHAI
 - WSD1 WAN CHAI (REPRODUCTION)
 - WSD2 CEMETERY BAY
 - WSD3 SA. BAY
 - WSD10 CHA KAO LINC
 - WSD15 SA. BAY (2)
 - WSD17 CLARRY BAY
 - WSD19 SHILOE BAY
 - WSD20 KENNEDY TOWN

DESIGNATED PROJECT'S TOP	WORK CONTRACT	DESIGNATED PROJECT NUMBER	COMPLETION (APPROXIMATE)
SP1 - CENTRAL WAN CHAI STYASS WORKS INCLUDING 15 ROAD TUNNEL AND SLOPE ROADS	CEDD CONTRACT NO. HK/2009/01	SP1 - SP3 - SP6	APRIL 2010
SP2 - ROAD P2 AND OTHER ROADS (PRIMARY & DISTRICT DISTRIBUTION ROADS)	CEDD CONTRACT NO. HK/2009/02	SP1 - SP3 - SP5	APRIL 2010
SP3 - PERMANENT AND TEMPORARY ROAD MAINTENANCE WORKS INCLUDING ASSOCIATED DRAINAGE WORKS IN WAN CHAI DEVELOPMENT PHASE 1T / WQ11 AREA	CEDD CONTRACT 3	SP1 - SP3	END 2011
SP4 - TEMPORARY BRIDGE-SHELTER 1 (SP4 NOT TO BE IMPLEMENTED)	CEDD CONTRACT 4	SP1 - SP3	END 2011
SP5 - WAN CHAI EAST SEWAGE DUCT/FALL	CEDD CONTRACT 5	SP3	2010
SP6 - DISCREET FOR THE CROSS-HARBOUR WATER MAINS	HYD CONTRACT NO. HY/2009/11	SP3	18 AUGUST 2010
	HYD CONTRACT NO. HY/2009/15	SP1 - SP3	SEPTEMBER 2010
	HYD CONTRACT NO. HY/2009/16	SP1	OCTOBER 2010
	HYD CONTRACT NO. HY/2009/18	SP1	NOVEMBER 2010
	HYD CONTRACT 12	SP1 - SP3	MID 2010

土木工程師學會
 Civil Engineering and
 Development Department

WAN CHAI DEVELOPMENT PHASE II

WAN CHAI DEVELOPMENT PHASE II, PHASE CENTRE -
 MAIN STREET OFFICE - CONSTRUCTION, PROTECTION
 AND TESTING WORKS (STAGE 1)

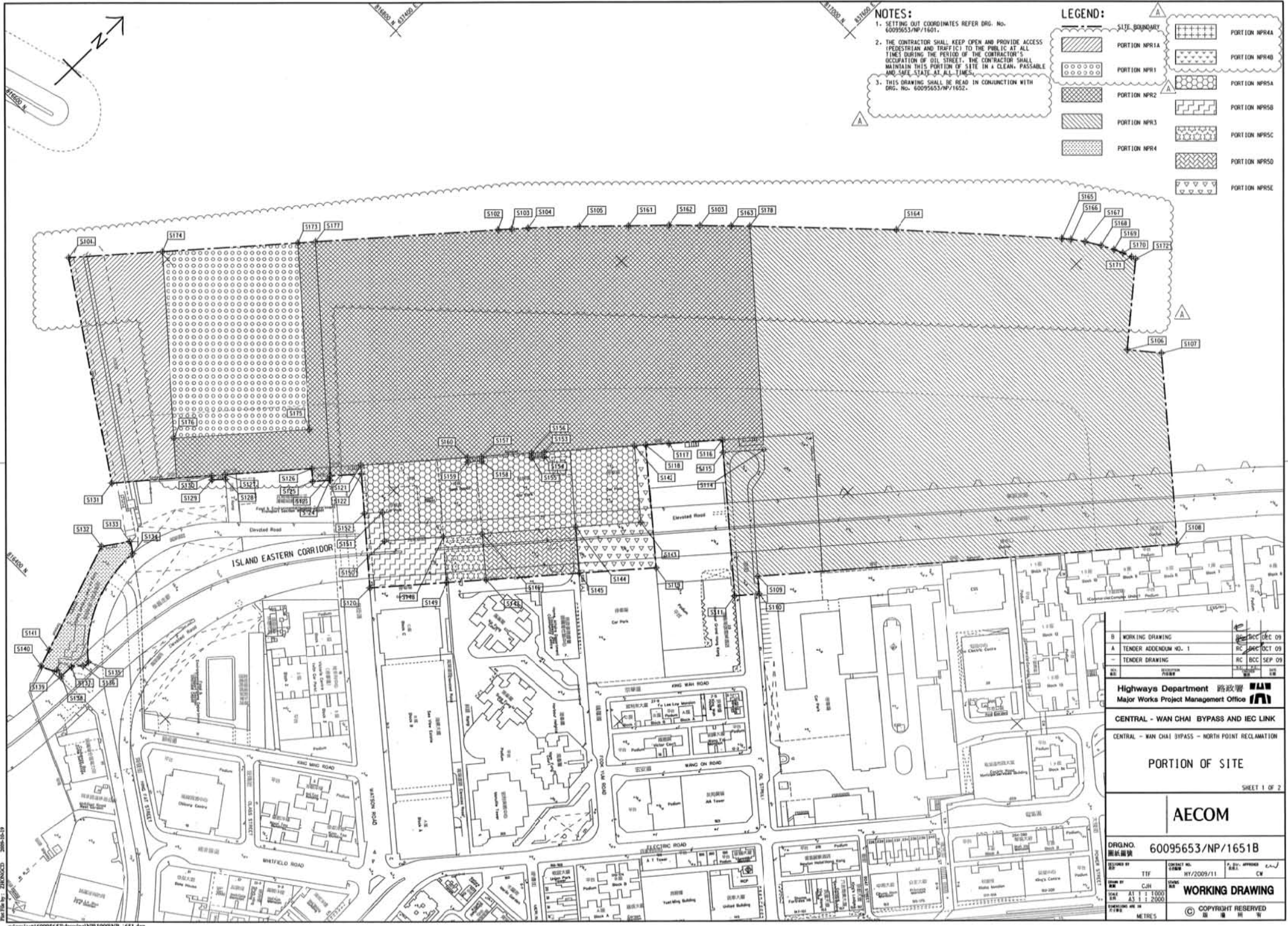
**LOCATIONS OF
WATER QUALITY
MONITORING STATIONS**

AECOM

DRAWING NUMBER **60041297/C5/SK001**

DATE	DRAWN BY	CHECKED BY	SCALE
2010	WJ	WJ	1:1
DATE	DATE	DATE	DATE
2010	2010	2010	2010

COPYRIGHT RESERVED



NOTES:

1. SETTING OUT COORDINATES REFER DRG. No. 60095653/NP/1601.
2. THE CONTRACTOR SHALL KEEP OPEN AND PROVIDE ACCESS (PEDESTRIAN AND TRAFFIC) TO THE PUBLIC AT ALL TIMES DURING THE PERIOD OF THE CONTRACTOR'S OCCUPATION OF OIL STREET. THE CONTRACTOR SHALL MAINTAIN THIS PORTION OF SITE IN A CLEAN, PASSABLE AND SAFE STATE AT ALL TIMES.
3. THIS DRAWING SHALL BE READ IN CONJUNCTION WITH DRG. No. 60095653/NP/1652.

LEGEND:

[Dotted pattern]	PORTION NPR1	[Cross-hatch pattern]	PORTION NPR4
[Diagonal lines /]	PORTION NPR2	[Diagonal lines \]	PORTION NPR5
[Diagonal lines /]	PORTION NPR3	[Diagonal lines \]	PORTION NPR6
[Diagonal lines /]	PORTION NPR4	[Diagonal lines \]	PORTION NPR7
[Diagonal lines /]	PORTION NPR5	[Diagonal lines \]	PORTION NPR8
[Diagonal lines /]	PORTION NPR6	[Diagonal lines \]	PORTION NPR9
[Diagonal lines /]	PORTION NPR7	[Diagonal lines \]	PORTION NPR10
[Diagonal lines /]	PORTION NPR8	[Diagonal lines \]	PORTION NPR11
[Diagonal lines /]	PORTION NPR9	[Diagonal lines \]	PORTION NPR12
[Diagonal lines /]	PORTION NPR10	[Diagonal lines \]	PORTION NPR13
[Diagonal lines /]	PORTION NPR11	[Diagonal lines \]	PORTION NPR14
[Diagonal lines /]	PORTION NPR12	[Diagonal lines \]	PORTION NPR15
[Diagonal lines /]	PORTION NPR13	[Diagonal lines \]	PORTION NPR16
[Diagonal lines /]	PORTION NPR14	[Diagonal lines \]	PORTION NPR17
[Diagonal lines /]	PORTION NPR15	[Diagonal lines \]	PORTION NPR18
[Diagonal lines /]	PORTION NPR16	[Diagonal lines \]	PORTION NPR19
[Diagonal lines /]	PORTION NPR17	[Diagonal lines \]	PORTION NPR20
[Diagonal lines /]	PORTION NPR18	[Diagonal lines \]	PORTION NPR21
[Diagonal lines /]	PORTION NPR19	[Diagonal lines \]	PORTION NPR22
[Diagonal lines /]	PORTION NPR20	[Diagonal lines \]	PORTION NPR23
[Diagonal lines /]	PORTION NPR21	[Diagonal lines \]	PORTION NPR24
[Diagonal lines /]	PORTION NPR22	[Diagonal lines \]	PORTION NPR25
[Diagonal lines /]	PORTION NPR23	[Diagonal lines \]	PORTION NPR26
[Diagonal lines /]	PORTION NPR24	[Diagonal lines \]	PORTION NPR27
[Diagonal lines /]	PORTION NPR25	[Diagonal lines \]	PORTION NPR28
[Diagonal lines /]	PORTION NPR26	[Diagonal lines \]	PORTION NPR29
[Diagonal lines /]	PORTION NPR27	[Diagonal lines \]	PORTION NPR30
[Diagonal lines /]	PORTION NPR28	[Diagonal lines \]	PORTION NPR31
[Diagonal lines /]	PORTION NPR29	[Diagonal lines \]	PORTION NPR32
[Diagonal lines /]	PORTION NPR30	[Diagonal lines \]	PORTION NPR33
[Diagonal lines /]	PORTION NPR31	[Diagonal lines \]	PORTION NPR34
[Diagonal lines /]	PORTION NPR32	[Diagonal lines \]	PORTION NPR35
[Diagonal lines /]	PORTION NPR33	[Diagonal lines \]	PORTION NPR36
[Diagonal lines /]	PORTION NPR34	[Diagonal lines \]	PORTION NPR37
[Diagonal lines /]	PORTION NPR35	[Diagonal lines \]	PORTION NPR38
[Diagonal lines /]	PORTION NPR36	[Diagonal lines \]	PORTION NPR39
[Diagonal lines /]	PORTION NPR37	[Diagonal lines \]	PORTION NPR40
[Diagonal lines /]	PORTION NPR38	[Diagonal lines \]	PORTION NPR41
[Diagonal lines /]	PORTION NPR39	[Diagonal lines \]	PORTION NPR42
[Diagonal lines /]	PORTION NPR40	[Diagonal lines \]	PORTION NPR43
[Diagonal lines /]	PORTION NPR41	[Diagonal lines \]	PORTION NPR44
[Diagonal lines /]	PORTION NPR42	[Diagonal lines \]	PORTION NPR45
[Diagonal lines /]	PORTION NPR43	[Diagonal lines \]	PORTION NPR46
[Diagonal lines /]	PORTION NPR44	[Diagonal lines \]	PORTION NPR47
[Diagonal lines /]	PORTION NPR45	[Diagonal lines \]	PORTION NPR48
[Diagonal lines /]	PORTION NPR46	[Diagonal lines \]	PORTION NPR49
[Diagonal lines /]	PORTION NPR47	[Diagonal lines \]	PORTION NPR50
[Diagonal lines /]	PORTION NPR48	[Diagonal lines \]	PORTION NPR51
[Diagonal lines /]	PORTION NPR49	[Diagonal lines \]	PORTION NPR52
[Diagonal lines /]	PORTION NPR50	[Diagonal lines \]	PORTION NPR53
[Diagonal lines /]	PORTION NPR51	[Diagonal lines \]	PORTION NPR54
[Diagonal lines /]	PORTION NPR52	[Diagonal lines \]	PORTION NPR55
[Diagonal lines /]	PORTION NPR53	[Diagonal lines \]	PORTION NPR56
[Diagonal lines /]	PORTION NPR54	[Diagonal lines \]	PORTION NPR57
[Diagonal lines /]	PORTION NPR55	[Diagonal lines \]	PORTION NPR58
[Diagonal lines /]	PORTION NPR56	[Diagonal lines \]	PORTION NPR59
[Diagonal lines /]	PORTION NPR57	[Diagonal lines \]	PORTION NPR60
[Diagonal lines /]	PORTION NPR58	[Diagonal lines \]	PORTION NPR61
[Diagonal lines /]	PORTION NPR59	[Diagonal lines \]	PORTION NPR62
[Diagonal lines /]	PORTION NPR60	[Diagonal lines \]	PORTION NPR63
[Diagonal lines /]	PORTION NPR61	[Diagonal lines \]	PORTION NPR64
[Diagonal lines /]	PORTION NPR62	[Diagonal lines \]	PORTION NPR65
[Diagonal lines /]	PORTION NPR63	[Diagonal lines \]	PORTION NPR66
[Diagonal lines /]	PORTION NPR64	[Diagonal lines \]	PORTION NPR67
[Diagonal lines /]	PORTION NPR65	[Diagonal lines \]	PORTION NPR68
[Diagonal lines /]	PORTION NPR66	[Diagonal lines \]	PORTION NPR69
[Diagonal lines /]	PORTION NPR67	[Diagonal lines \]	PORTION NPR70
[Diagonal lines /]	PORTION NPR68	[Diagonal lines \]	PORTION NPR71
[Diagonal lines /]	PORTION NPR69	[Diagonal lines \]	PORTION NPR72
[Diagonal lines /]	PORTION NPR70	[Diagonal lines \]	PORTION NPR73
[Diagonal lines /]	PORTION NPR71	[Diagonal lines \]	PORTION NPR74
[Diagonal lines /]	PORTION NPR72	[Diagonal lines \]	PORTION NPR75
[Diagonal lines /]	PORTION NPR73	[Diagonal lines \]	PORTION NPR76
[Diagonal lines /]	PORTION NPR74	[Diagonal lines \]	PORTION NPR77
[Diagonal lines /]	PORTION NPR75	[Diagonal lines \]	PORTION NPR78
[Diagonal lines /]	PORTION NPR76	[Diagonal lines \]	PORTION NPR79
[Diagonal lines /]	PORTION NPR77	[Diagonal lines \]	PORTION NPR80
[Diagonal lines /]	PORTION NPR78	[Diagonal lines \]	PORTION NPR81
[Diagonal lines /]	PORTION NPR79	[Diagonal lines \]	PORTION NPR82
[Diagonal lines /]	PORTION NPR80	[Diagonal lines \]	PORTION NPR83
[Diagonal lines /]	PORTION NPR81	[Diagonal lines \]	PORTION NPR84
[Diagonal lines /]	PORTION NPR82	[Diagonal lines \]	PORTION NPR85
[Diagonal lines /]	PORTION NPR83	[Diagonal lines \]	PORTION NPR86
[Diagonal lines /]	PORTION NPR84	[Diagonal lines \]	PORTION NPR87
[Diagonal lines /]	PORTION NPR85	[Diagonal lines \]	PORTION NPR88
[Diagonal lines /]	PORTION NPR86	[Diagonal lines \]	PORTION NPR89
[Diagonal lines /]	PORTION NPR87	[Diagonal lines \]	PORTION NPR90
[Diagonal lines /]	PORTION NPR88	[Diagonal lines \]	PORTION NPR91
[Diagonal lines /]	PORTION NPR89	[Diagonal lines \]	PORTION NPR92
[Diagonal lines /]	PORTION NPR90	[Diagonal lines \]	PORTION NPR93
[Diagonal lines /]	PORTION NPR91	[Diagonal lines \]	PORTION NPR94
[Diagonal lines /]	PORTION NPR92	[Diagonal lines \]	PORTION NPR95
[Diagonal lines /]	PORTION NPR93	[Diagonal lines \]	PORTION NPR96
[Diagonal lines /]	PORTION NPR94	[Diagonal lines \]	PORTION NPR97
[Diagonal lines /]	PORTION NPR95	[Diagonal lines \]	PORTION NPR98
[Diagonal lines /]	PORTION NPR96	[Diagonal lines \]	PORTION NPR99
[Diagonal lines /]	PORTION NPR97	[Diagonal lines \]	PORTION NPR100

B	WORKING DRAWING	09 DEC 09
A	TENDER ADDENDUM NO. 1	09 OCT 09
-	TENDER DRAWING	09 SEP 09

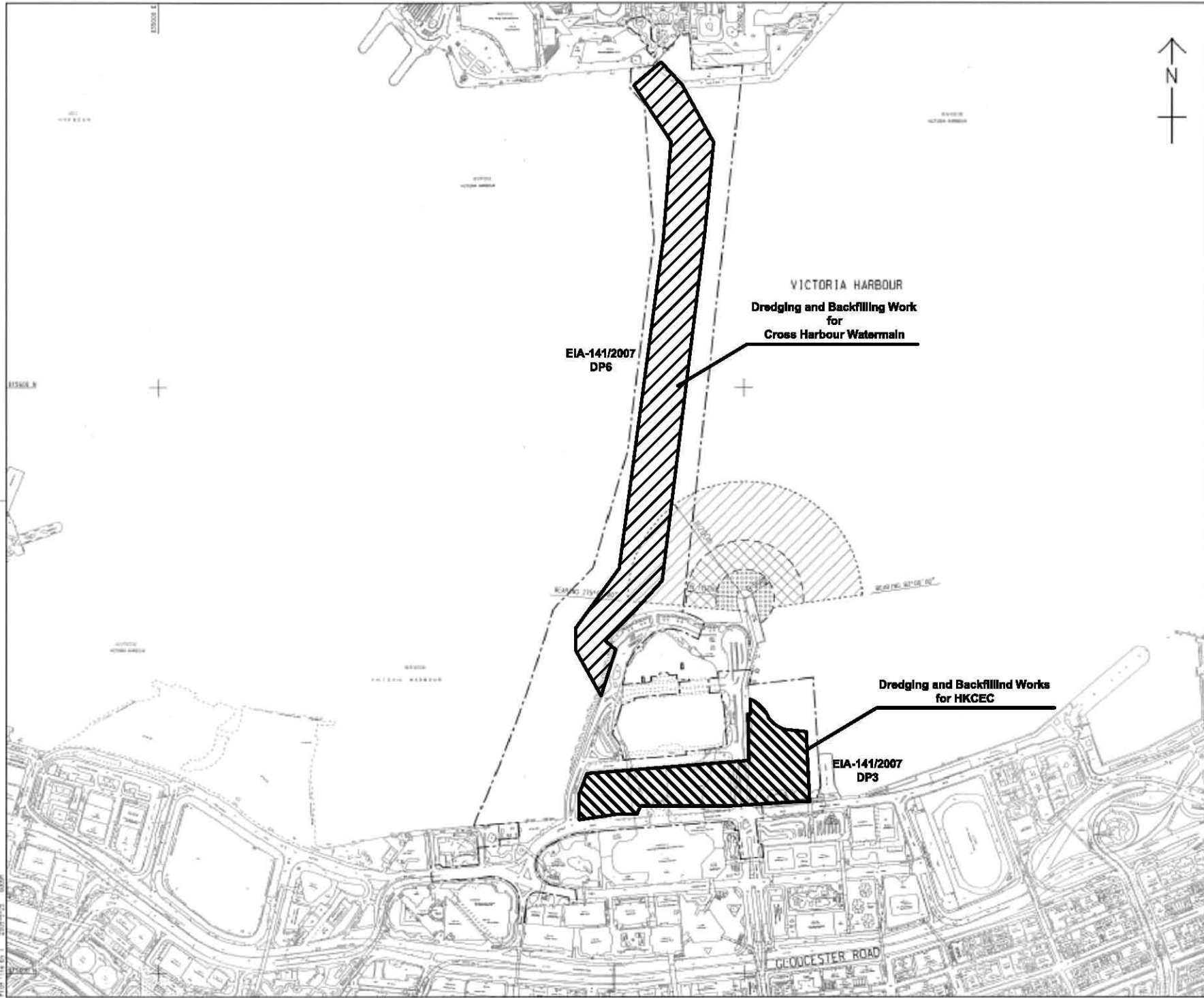
Highways Department 路政署
Major Works Project Management Office

CENTRAL - WAN CHAI BYPASS AND IEC LINK
CENTRAL - WAN CHAI BYPASS - NORTH POINT RECLAMATION

PORTION OF SITE
SHEET 1 OF 2

AECOM

DRGNO. 圖紙編號	60095653/NP/1651B
DESIGNED BY 設計人	TTF
CHECKED BY 校核人	CJH
DATE 日期	AT 17 1000 08 11 2009
SCALE 比例尺	1:1000
UNIT 單位	METRES
ISSUED BY 發出人	HW/2009/11
APPROVED BY 核准人	CW
WORKING DRAWING	
COPYRIGHT RESERVED 版權所有	



LOCATION PLAN
SCALE 1 : 5000

- NOTES:**
1. ALL DIMENSIONS ARE IN METRES UNLESS OTHERWISE NOTED.
 2. THE RESTRICTION ZONE IS THIS DRAWING WILL COME INTO EFFECT AFTER THE OPERATION OF THE GOVERNMENT HULLING AT EDP/D/D/E LAST.

LEGEND:

	CONTRACT BOUNDARY
	WORKING RESTRICTION ZONE
	NAVIGATION AND MOORING RESTRICTION ZONE
	WORKING BARGE, NAVIGATION AND MOORING RESTRICTION ZONE

VICTORIA HARBOUR
Dredging and Backfilling Work for Cross Harbour Watermain

EIA-141/2007 DP6

Dredging and Backfilling Works for HKCEC

EIA-141/2007 DP3

1	TENDER ADDENDUM NO. 4	2009/09/25
2	TENDER ADDENDUM NO. 1	2009/09/25
3	TENDER DRAWING	2009/09/25

CEDD 土木工程發展署
Civil Engineering and Development Department

WAN CHAI DEVELOPMENT PHASE II

WAN CHAI DEVELOPMENT PHASE II -
CONCRETE - PILING PILES (DP3 & 6)
KING KONG CONVENTION AND EXHIBITION CENTRE
RESTRICTED ZONE FOR CONSTRUCTION VESSELS
(Contract no: HK/2009/01)

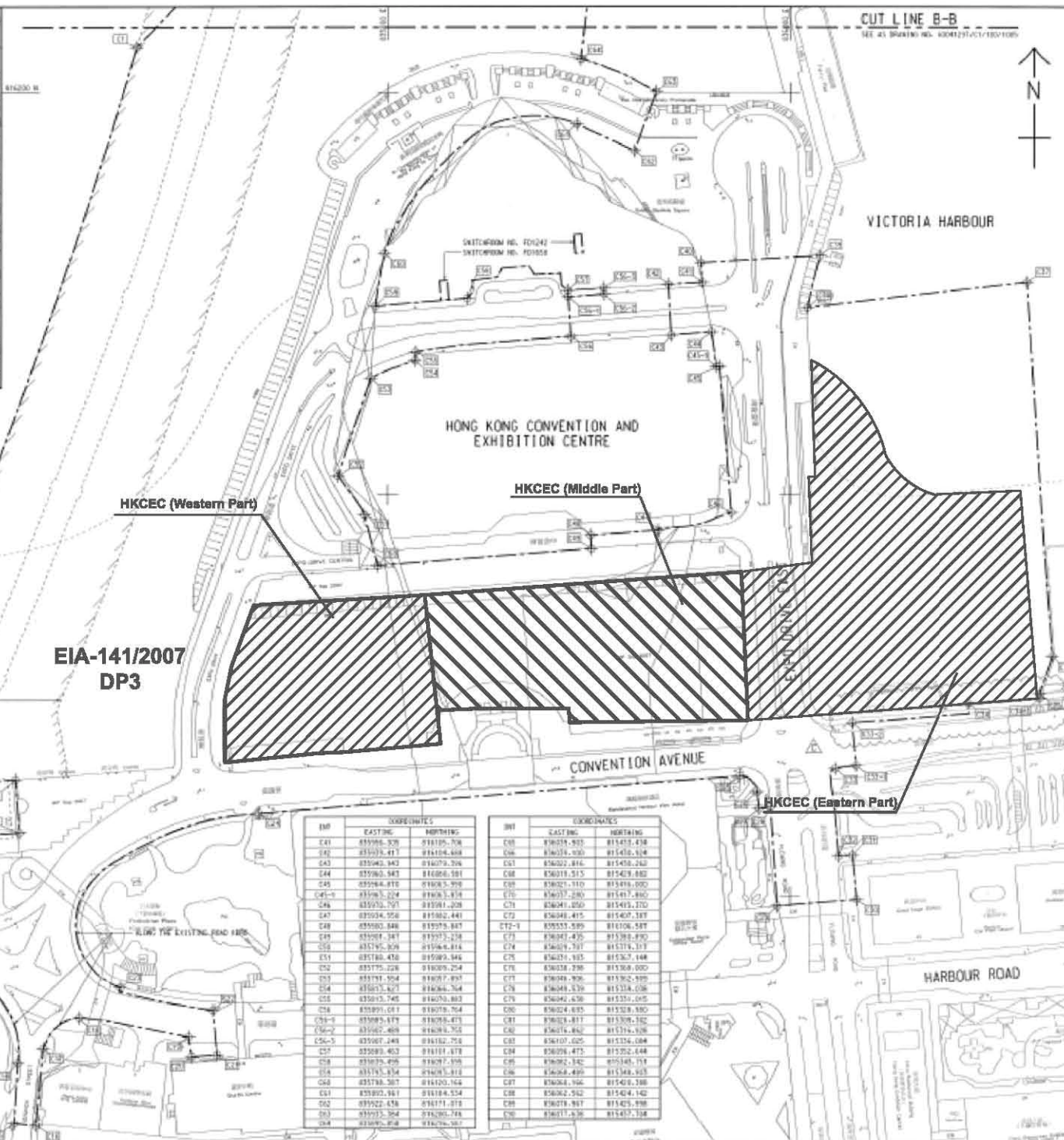
AECOM

DRGNO.	60041297/C1/100/1010B
DATE	16/2009/01
SCALE	AS 1:8000
COPYRIGHT RESERVED	



INSET 'A'
SCALE 1:1000

CENTRAL DISTRICT



EIA-141/2007
DP3

HKCEC (Western Part)

HKCEC (Middle Part)

HKCEC (Eastern Part)

INT	COORDINATES	
	EASTING	NORTHING
C41	85996.526	818105.708
C42	85997.417	818104.408
C43	85982.943	818079.206
C44	85982.543	818086.581
C45	85984.818	818085.209
C46	85985.204	818083.818
C46	85985.204	818083.818
C47	85984.818	818082.441
C48	85983.441	818079.887
C49	85981.064	818077.238
C50	85979.688	818066.818
C51	85984.478	818089.846
C52	85979.226	818089.224
C53	85979.504	818077.897
C54	85983.627	818084.764
C55	85983.745	818079.883
C56	85989.071	818078.764
C56-1	85989.071	818078.873
C56-2	85982.468	818078.765
C56-3	85987.248	818182.758
C57	85989.403	818181.878
C58	85979.498	818087.198
C59	85979.504	818083.818
C60	85979.507	818120.168
C61	85980.881	818184.524
C62	85982.478	818171.812
C63	85983.504	818280.788
C64	85983.818	818276.307

INT	COORDINATES	
	EASTING	NORTHING
C65	85989.903	818413.438
C66	85983.000	818413.618
C67	85982.816	818413.240
C68	85989.515	818413.882
C69	85982.110	818414.000
C70	85987.289	818413.882
C71	85991.050	818413.270
C72	85994.415	818407.187
C72-1	85955.589	818106.587
C73	85987.435	818385.890
C74	85989.797	818374.107
C75	85981.935	818383.188
C76	85988.298	818388.000
C77	85989.906	818382.898
C78	85984.539	818374.038
C79	85984.638	818351.015
C80	85984.635	818328.880
C81	85983.417	818308.182
C82	85981.882	818376.188
C83	85987.025	818326.084
C84	85986.473	818322.444
C85	85982.342	818343.718
C86	85984.499	818348.925
C87	85984.196	818343.388
C88	85982.512	818343.142
C89	85989.981	818425.898
C90	85987.638	818437.188

CUT LINE B-B
SEE AT DRAWING NO. A00025/C1/100/1006



KEY PLAN
SCALE 1:10000

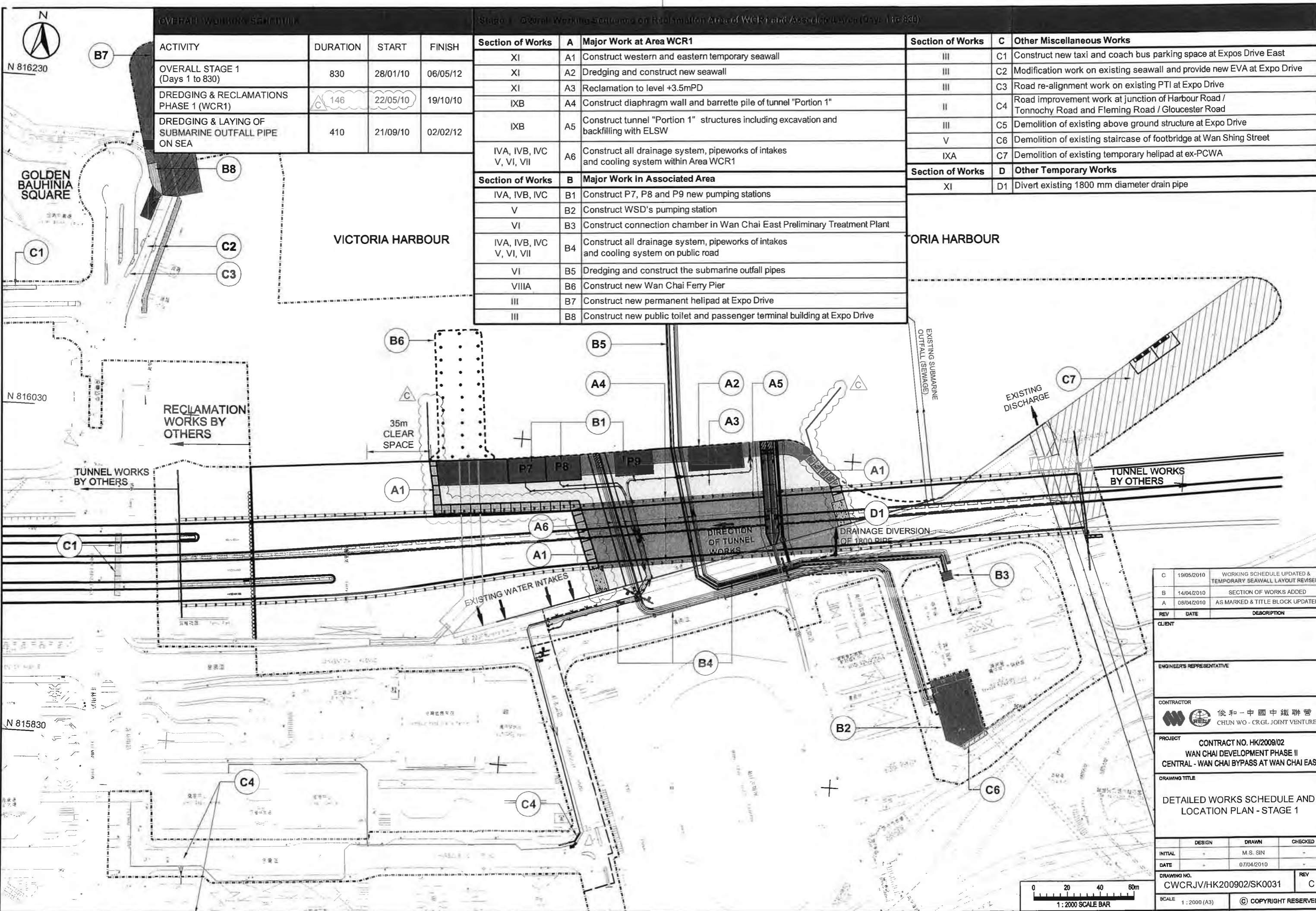
NOTE:
1. FOR NOTES & LEGEND, REFER TO DRAWING NO. A00025/C1/100/1006.

INT	COORDINATES	
	EASTING	NORTHING
C1	859879.205	818222.559
C2	85979.207	818282.299
C3	85944.561	818284.825
C4	85941.020	818281.014
C5	85982.482	818295.522
C6	85983.584	818281.612
C7	85986.585	818281.197
C8	85989.199	818281.147
C9	85988.433	818282.241
C10	85989.182	818281.050
C11	85985.389	818288.075
C12	85987.486	818288.107
C13	85985.468	818284.817
C14	85986.433	818281.122
C15	859874.289	818288.500
C16	85985.195	818285.525
C17	85989.198	818284.441
C18	85986.085	818288.816
C19	85981.421	818285.587
C20	85982.537	818282.881
C21	859815.285	818274.484
C22	859813.182	818284.245
C23	859827.086	818288.074
C24	85979.984	818283.675
C25	859815.288	818288.251
C26	859801.667	818282.286
C27	85984.025	818283.896
C28	85989.218	818284.245
C29	85981.525	818288.182
C30	85983.781	818288.687
C31	85983.216	818288.470
C32	859824.142	818282.117
C33	859821.081	818284.882
C34	859828.299	818284.709
C35	85982.428	818288.286
C36	859808.187	818288.286
C37	859824.812	818288.093
C38	859824.747	818288.285
C39	859828.850	818288.194
C40	859819.190	818288.057
C41	859828.810	818287.285
C42	859816.906	818288.088
C43	859825.682	818288.552

C	TENDER ADDENDUM NO.4	SHW/PL/SEP/08
B	TENDER ADDENDUM NO.2	SHW/PL/SEP/08
A	TENDER ADDENDUM NO.1	SHW/PL/SEP/08
-	TENDER DRAWING	SHW/PL/SEP/08


土木工程發展署
 Civil Engineering and Development Department
WAN CHAI DEVELOPMENT PHASE II
 WAI CHAI DEVELOPMENT PHASE II -
 CENTRAL AND WEST DISTRICTS
 HONG KONG CONVENTION AND EXHIBITION CENTRE
SITE BOUNDARY SETTING OUT PLAN
 (Contract no. HK/2009/01)

AECOM
 DRGNO. 60041297/C1/100/1006C
 SHEET NO. 1 OF 1
 DATE: 08/2009/01
 DRAWN BY: JAC
 CHECKED BY: JAC
 APPROVED BY: JAC
 SCALE: AS SHOWN
 COPYRIGHT RESERVED



OVERALL WORKING SCHEDULE

ACTIVITY	DURATION	START	FINISH
OVERALL STAGE 1 (Days 1 to 830)	830	28/01/10	06/05/12
DREDGING & RECLAMATIONS PHASE 1 (WCR1)	146	22/05/10	19/10/10
DREDGING & LAYING OF SUBMARINE OUTFALL PIPE ON SEA	410	21/09/10	02/02/12

Stage 1 - Overall Working Schedules on Reclamation Area of WCR1 and Associated Area (Days 1 to 830)

Section of Works	A	Major Work at Area WCR1
XI	A1	Construct western and eastern temporary seawall
XI	A2	Dredging and construct new seawall
XI	A3	Reclamation to level +3.5mPD
IXB	A4	Construct diaphragm wall and barrette pile of tunnel "Portion 1"
IXB	A5	Construct tunnel "Portion 1" structures including excavation and backfilling with ELSW
IVA, IVB, IVC, V, VI, VII	A6	Construct all drainage system, pipeworks of intakes and cooling system within Area WCR1
Section of Works	B	Major Work in Associated Area
IVA, IVB, IVC	B1	Construct P7, P8 and P9 new pumping stations
V	B2	Construct WSD's pumping station
VI	B3	Construct connection chamber in Wan Chai East Preliminary Treatment Plant
IVA, IVB, IVC, V, VI, VII	B4	Construct all drainage system, pipeworks of intakes and cooling system on public road
VI	B5	Dredging and construct the submarine outfall pipes
VIIIA	B6	Construct new Wan Chai Ferry Pier
III	B7	Construct new permanent helipad at Expo Drive
III	B8	Construct new public toilet and passenger terminal building at Expo Drive

Section of Works	C	Other Miscellaneous Works
III	C1	Construct new taxi and coach bus parking space at Expos Drive East
III	C2	Modification work on existing seawall and provide new EVA at Expo Drive
III	C3	Road re-alignment work on existing PTI at Expo Drive
II	C4	Road improvement work at junction of Harbour Road / Tonnochy Road and Fleming Road / Gloucester Road
III	C5	Demolition of existing above ground structure at Expo Drive
V	C6	Demolition of existing staircase of footbridge at Wan Shing Street
IXA	C7	Demolition of existing temporary helipad at ex-PCWA
Section of Works	D	Other Temporary Works
XI	D1	Divert existing 1800 mm diameter drain pipe

REV	DATE	DESCRIPTION
C	19/05/2010	WORKING SCHEDULE UPDATED & TEMPORARY SEAWALL LAYOUT REVISED
B	14/04/2010	SECTION OF WORKS ADDED
A	08/04/2010	AS MARKED & TITLE BLOCK UPDATED

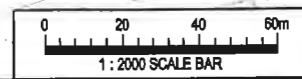
CLIENT: _____
 ENGINEER'S REPRESENTATIVE: _____

CONTRACTOR: 俊和-中國中鐵聯營
 CHUN WO - CRGL JOINT VENTURE

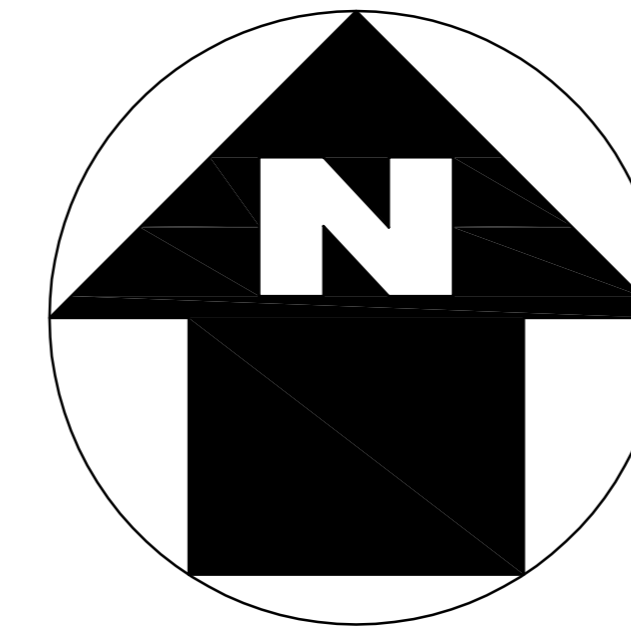
PROJECT: CONTRACT NO. HK/2009/02
 WAN CHAI DEVELOPMENT PHASE II
 CENTRAL - WAN CHAI BYPASS AT WAN CHAI EAST

DRAWING TITLE: DETAILED WORKS SCHEDULE AND LOCATION PLAN - STAGE 1

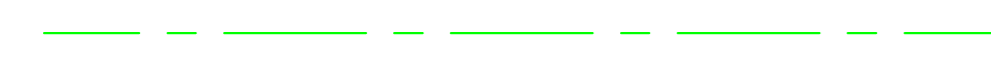
DESIGN	DRAWN	CHECKED
INITIAL: -	M.S. SIN	-
DATE: -	07/04/2010	-
DRAWING NO. CWCRJV/HK200902/SK0031	REV: C	
SCALE: 1:2000 (A3)	© COPYRIGHT RESERVED	



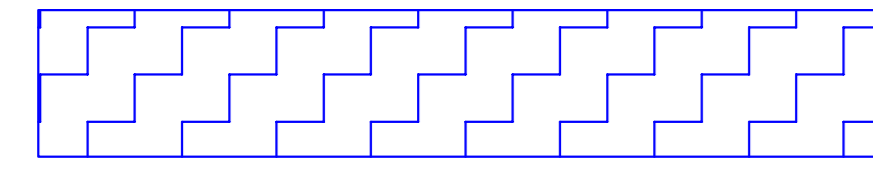
港口
HARBOUR



LEGEND:



WORKS AREA



DREDGING AREA FOR
MITIGATION OF ODOUR(DP3)



SITE BOUNDARY

TCBR1E

TCBR2
AND
TCBR3

銅鑼灣避風塘
CAUSEWAY BAY TYPHOON SHELTER

TCBR4

TCBR1W

貨物裝卸灣
Cargo Handling Basin
TPCWAW

TPCWAE

DP3

中國建築工程(香港)有限公司
CHINA STATE CONSTRUCTION ENGR. (HONG KONG) LTD.

Highways Department
CONTRACT NO. HY/2009/15
CENTRAL-WAN CHAI BYPASS -TUNNEL
(CAUSEWAY BAY TYPHOON
SHELTER SECTION)

TITLE
LOCATION PLAN OF WORKS AREA

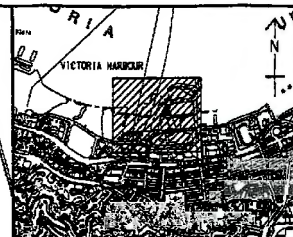
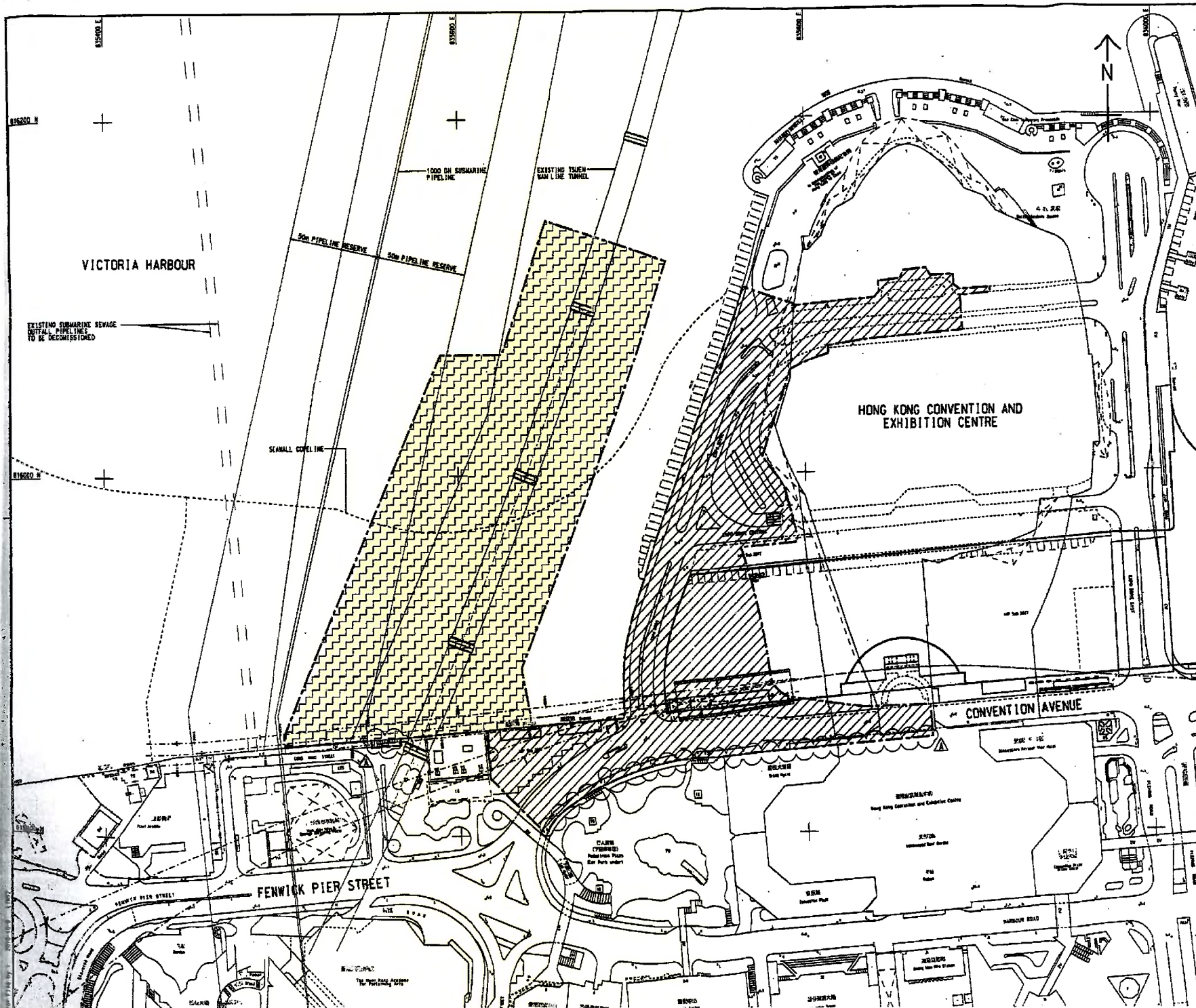
DRG. NO.
CWBT/EPD/001B

SCALE
1:1000 @ A0

DIMENSIONS ARE IN
MILLIMETERS

STATUS
COPYRIGHT RESERVED

維多利亞公園
Victoria Park



KEY PLAN
SCALE 1 : 20000

- NOTES:**
- COORDINATES ARE BASED ON HONG KONG METRIC GRID (1980) UNLESS OTHERWISE NOTED.
 - LEVELS ARE IN METRES RELATIVE TO HONG KONG PRINCIPAL DATUM (1985) UNLESS OTHERWISE NOTED.
 - DIMENSIONS ARE IN MILLIMETERS UNLESS OTHERWISE NOTED.
 - SETTING OUT DIMENSIONS, LEVELS, COORDINATES ARE TO BE CALCULATED BY THE CONTRACTOR. NO INFORMATION SHOULD BE SCALED PHYSICALLY OR ELECTRONICALLY FROM THE DRAWINGS OR FILES.
 - SITE BOUNDARY SETTING OUT POINTS SHALL REFER TO DRAWING NO. 60041297/C4/100/1201.

- LEGEND:**
- SITE BOUNDARY
 - PORTION 1
 - PORTION 2 (DELAY POSSESSION)


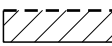
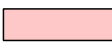



TENDER ADDENDUM NO.1	SWH JYL OCT 10
TENDER DRAWING	SWH JYL SEP 10

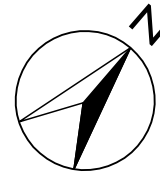

土木工務發展局
 Civil Engineering and
 Development Department
WAN CHAI DEVELOPMENT PHASE II
 WAN CHAI DEVELOPMENT PHASE II -
 CENTRAL-WAN CHAI STAFFS OVER MTR TSUEN WAN LINE
PORTIONS OF THE SITE
 (Contract HK/2010/06)

AECOM

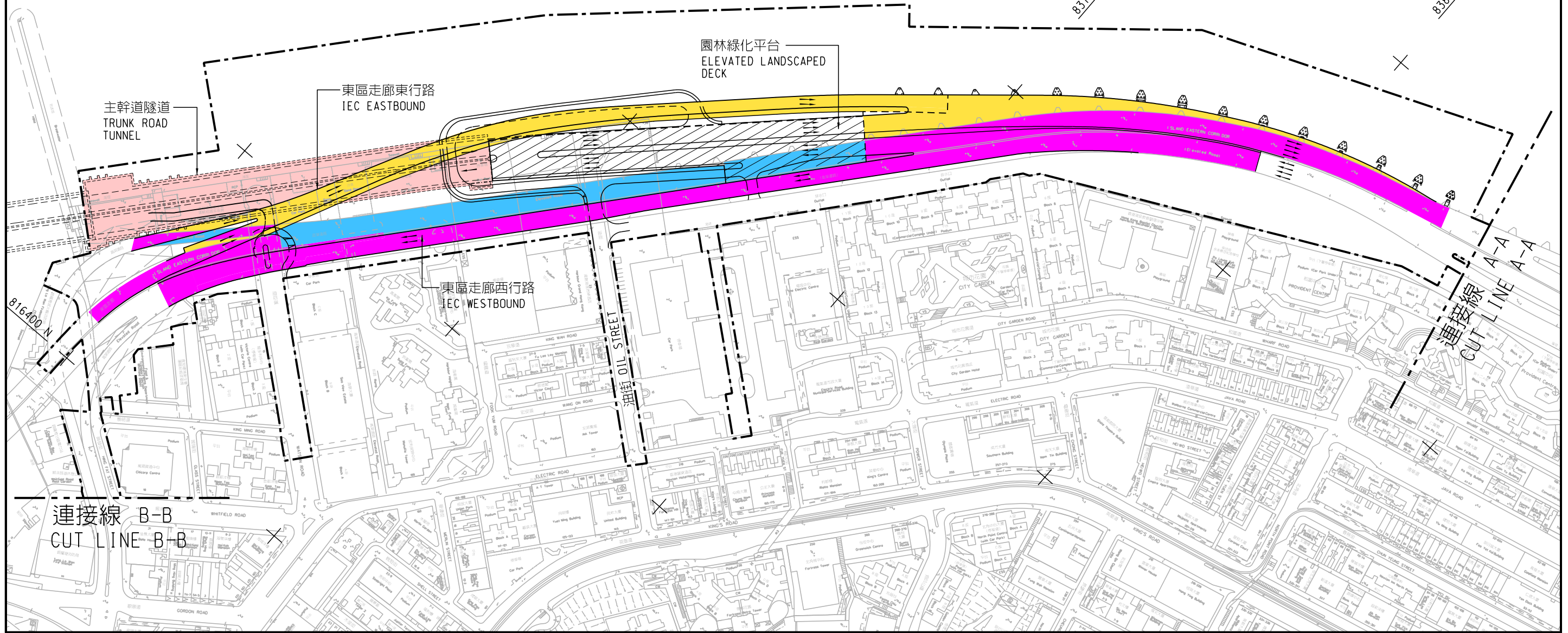
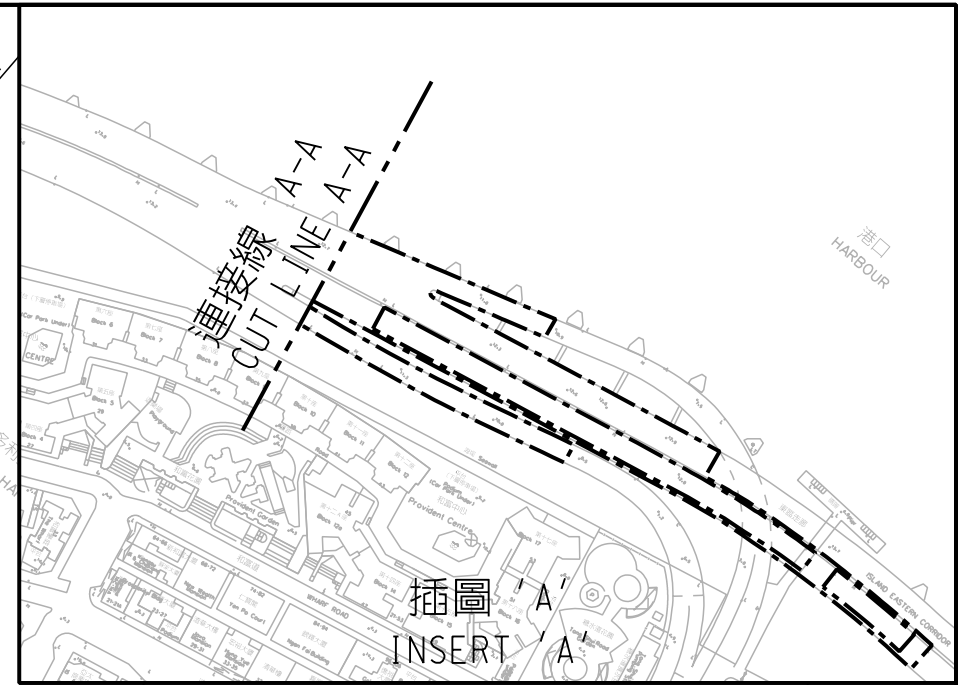
DRAWING NO. 60041297/C4/100/1301A	
DESIGNED BY SWH	CHECKED BY TSN
DRAWN BY ADC	DATE: 10/2010/06
SCALE: AS SHOWN	PROJECT: HK/2010/06
COPYRIGHT RESERVED	

圖例：
LEGEND:

-  地界範圍
SITE BOUNDARY
-  園林綠化平台
LANDSCAPED DECK
-  主幹道隧道
TRUNK ROAD TUNNEL
-  擬建高架道路
PROPOSED ELEVATED CARRIAGEWAY
-  現有高架行車道將予拆卸
EXISTING ELEVATED CARRIAGEWAY TO BE DEMOLISHED
-  現有高架行車道將予拆卸及重建
EXISTING ELEVATED CARRIAGEWAY TO BE DEMOLISHED AND RECONSTRUCTED



維多利亞海港 ×
VICTORIA HARBOUR



Plot File by: ZHOUNL 2011-1-12

合約編號 HY/2009/19 - 中環灣仔繞道 - 北角段隧道及東區走廊連接路
CONTRACT NO. HY/2009/19 - CENTRAL-WAN CHAI BYPASS - TUNNEL (NORTH POINT SECTION) AND ISLAND EASTERN CORRIDOR LINK

SCALE 1 : 3000

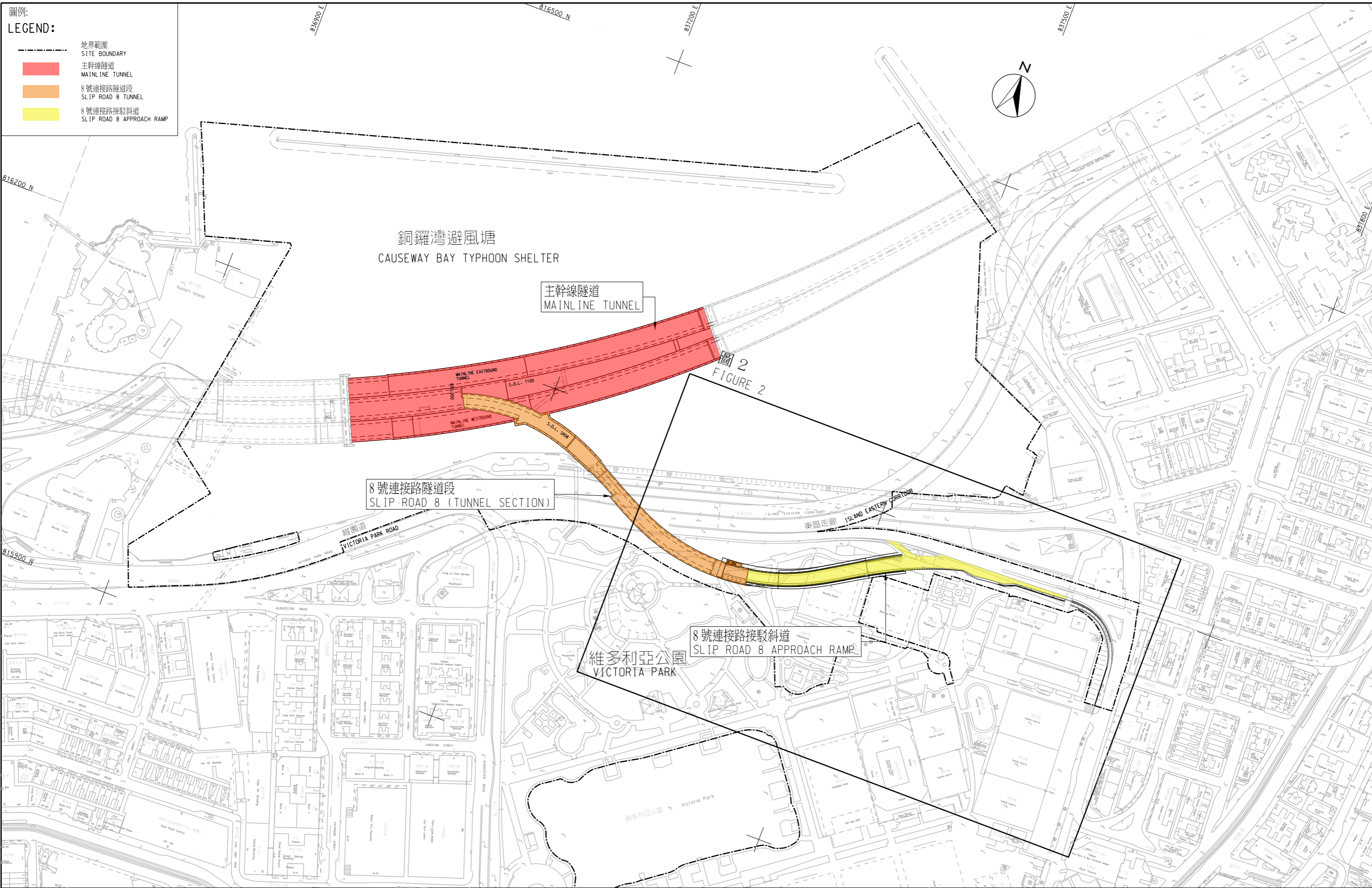
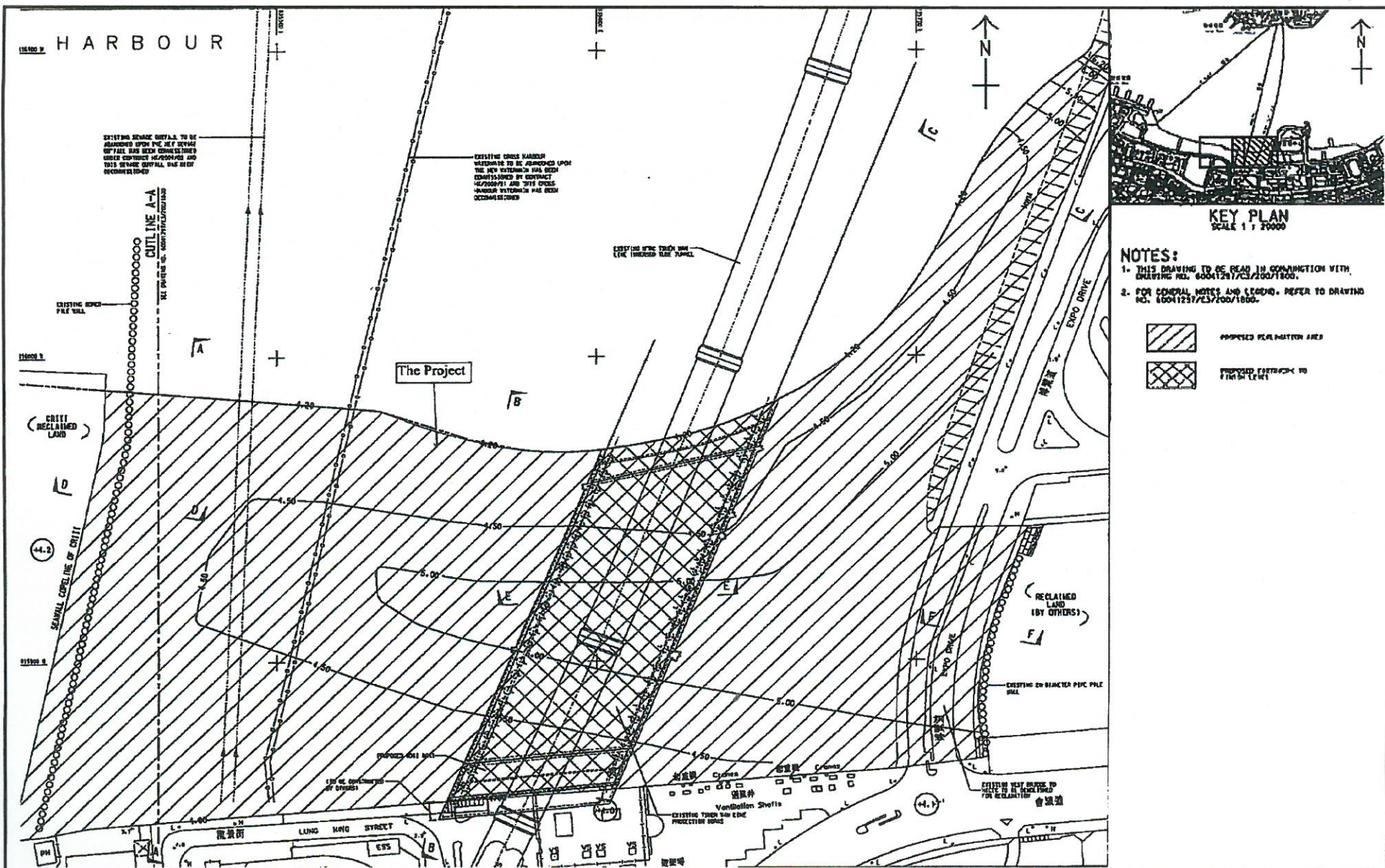


圖1- 合約編號 HY/2010/08中環灣仔繞道-8號連接路段隧道

FIGURE 1 - CONTRACT NO. HY/2010/08 - CENTRAL - WAN CHAI BYPASS - TUNNEL (SLIP ROAD 8 SECTION)

SCALE 1 : 3000



Project Title: Wan Chai Development Phase II – Central Wan Chai Bypass at Wan Chai West (Contract No. HK/2012/08) – Marine Works
工程項目名稱: 灣仔發展計劃第二期 - 中環灣仔繞道-灣仔西段(合約編號:HK/2012/08)-海事工程
Environmental Permit No. : FEP-06/356/2009
環境許可證編號 : FEP-06/356/2009

Figure 1b : General Layout of the Project
圖 1b : 工程項目佈局圖

(This figure was prepared based on Figure 1b of Application for Further Environmental Permit (Application No.: FEP 145/2013))
 (本圖是根據申請新的環境許可證(申請書編號 FEP-145/2013) 圖 1b 編製)

